

2017

REPORT *TO OUR* COMMUNITIES



**Lenawee Intermediate
School District**

Message from the Superintendent



The Lenawee Intermediate School District is a regional educational service agency that is committed to providing direct educational and support services to the children of Lenawee County. In addition, we are often able to extend some of these services to adults, employers, and the greater community. We remain focused on honoring our historical roots, but also leading into the future through creativity, innovation and collaboration to help create the best future for our community. This report is intended to highlight some of our recent successes and focus areas.

Our services are broad and extensive. To learn more about our organization, we encourage you to visit our website at www.lisd.us or follow us on social media for regular updates of current events, offerings, and accomplishments. Finally, if you have any questions or would like to know more about the Lenawee Intermediate School District, feel free to contact me directly at mark.haag@lisd.us or 517-265-1628.

Your partner in education,

Mark E. Haag, Superintendent



Young Children Services

Early On, Michigan's program for the Federal Individuals with Disabilities Education Act - Infants and Toddlers with Disabilities Program (IDEA Part C), provides early intervention services to families with infants and toddlers birth to age three who have a developmental delay or a diagnosed health condition that could lead to such delay. Early On specializes in evaluating and serving children that are not developing at the same rate as other children in many areas including physical, cognitive, communication, adaptive, and social-emotional development. Early On also provides hearing and vision screenings for children birth to three.

Children and their families need support so that they can grow, develop, learn, and be as ready as possible for success with friends, in school, and in life. Early On Michigan was created to give them that support. Here is one recent example of the support this program can provide for families:

“Evie Smith was born eight weeks early in early 2014. Like many premature infants, Evie had trouble eating and had to be fed through her umbilical cord for her first week of life. Weighing in at just over two pounds, Evie was too little to master the art of ‘suck-swallow-breathe’ required to nurse or bottle feed, so the only option was a feeding tube inserted through her nose and down into her stomach. This would be the norm for Evie for the next five months. It required frequent changes to her feeding tube, and the majority of her face was covered in tape to keep everything in place. With all the irritation happening in the back of her throat, the simple acts of eating, laughing, vocalizing, and swallowing were uncomfortable at best. This led to a full-scale oral aversion, and after much research and prayer, we chose to have a G-Tube to be surgically placed in her belly until she overcame her oral dysfunction.

We received world class care from her specialists and therapist, and Evie made huge strides in her abilities after the surgery. However, we soon moved across the state, and Evie's treatments became rare and inconsistent as we searched for a specialist or therapist who could get her to respond to oral stimulation. At her best, Evie was only able to take 30% of her daily caloric needs by mouth, and her language skills were almost non-existent as she would jabber with little to no discernable words. She also made little to no eye contact and exhibited poor motor skills.

In fall 2016, we met Michelle Moorehead, a speech-language pathologist for the Lenawee ISD, by complete chance while garage sale shopping. Delighted by her knowledge and understanding, we took her advice and contacted the LISD's Milton C. Porter Center. We had no idea what we were getting into, and honestly didn't expect much improvement as we had been battling Evie's defenses for two and a half years. Michelle introduced us to another speech-language pathologist, Chris Dowd, who would take over Evie's speech/OT needs. Chris started Evie on a sensory diet of swinging, jumping, rolling, and vibration. We were told this would help Evie find awareness of herself and how her body interacts with the world around her, and in turn, would help lower her oral defenses.



Within one month, Evie was eating and drinking all of her food by mouth and correctly verbalizing pictures from her flash cards! By springtime, Evie was forming sentences, adding adjectives to the pictures on her flash cards, and correctly transferring those adjectives to other items she would encounter in everyday life. We could never have imagined that such a specialized treatment plan could yield such quick results. We marvel to think where Evie could be if we had known about this program sooner, and frightened to think where she'd be without it.

On June 15th, Evie had her G-Tube permanently removed, exactly 3 years after getting it in. We are forever indebted to Chris and the whole team at the LISD Porter Center for creating a place where Evie can thrive and succeed! Evie will be graduating from her Work Out Words group with Chris and is moving on to preschool this fall. We owe a huge debt of gratitude to the LISD for Evie's success."

- Nate & Kate Smith

In Lenawee County, eligible children receive Early On services through the LISD's Young Children Services. With a service coordinator, families of eligible children participate in the development of an Individualized Family Service Plan that identifies the appropriate intervention services based on the child's strengths and needs. Services may include: developmental monitoring, providing strategies that are specific to the area of concern - which may include direct therapy such as physical or speech therapy, providing ideas and activities for parents to do in the home to encourage development of skills, and providing information and connections to local resources. These services are intended to be provided in the natural environment, a typical setting for same-age peers without a delay - often in the child's home.

As decades of brain research has demonstrated, positive early experiences are essential for later success in school and life. It has been well established that early intervention is an effective way to impact a child's development by preventing or reducing problems that can affect children as they get older and even into adulthood. Services to young children who have developmental delays have been shown to positively impact outcomes across developmental domains including health, language and communication, cognitive development, and social/emotional development.

While outcomes differ according to each child's disability and age at entry into early intervention, appropriate services help many children develop skills at a level equal to their peers by age three. In fact, over two in five infants and toddlers who receive appropriate early intervention services will not require special education in preschool and kindergarten entry. For children with severe disabilities, progress may be slower and children with degenerative conditions may even lose skills, but early intervention can help slow or reduce the impact of their disabilities. Furthermore, families benefit from early intervention by being able to better meet their children's special needs from an early age and throughout their lives.

National estimates indicate that if appropriate early intervention services are provided, 37% of those children will not need special education services when they enter preschool and 42% will not need special education services by the time they reach kindergarten.

Anyone can make a referral to Early On if they have concerns about a young child's growth and development. Referrals can be made by calling (517) 263-8931.

Program Highlights

JC/LISD ACADEMY: A REGIONAL MIDDLE COLLEGE

The JC/LISD Academy is a public middle college program for capable and self-motivated students located on the LISD TECH Center and Jackson College campuses and exists in partnership with all Lenawee County public school districts. It is designed to fully immerse high school aged students in the post-secondary learning environment, while affording them the opportunity to complete a high school diploma and associates degree in five years through the Michigan Department of Education’s Four Plus One Program.

During the 2016-2017 school year, 73 students were enrolled, and the JC/LISD Academy celebrated its largest graduating class of 18 students in 2017. JC/LISD Academy students earned the sixth highest average score on the spring SAT among public schools in Michigan, with a combined average of 1228, well above the SAT’s combined College and Career Readiness Benchmark of 1010. The JC/LISD Academy also received a perfect 100 score on the Michigan Department of Education’s school indexing system, based on data from the 2016-2017 school year. JC/LISD Academy was one of only 17 schools in Michigan to receive a 100 rating.

JC/LISD Academy students are active members of the community, serving through organizations such as Habitat for Humanity, Catherine Cobb, Daily Bread, and Gaslight Village Assisted Living. Students also have opportunities to learn how to further their post-secondary education through visits to Lourdes University, the University of Toledo, Siena Heights University, Jackson College Central Campus, and Adrian College.

2017 JC/LISD Academy Graduating Class



LENAWEE CELEBRATES MANUFACTURING DAY

Manufacturing is alive and well in Lenawee County! In fact, it is doing so well local manufacturing companies are having a hard time finding the talent to keep up with the demand. Gone are the days of 18% unemployment where every production-level job posting received a flood of applicants. Today, with unemployment hovering in the very low single digits, that flood has been reduced to a trickle. It's not just skilled positions - the region's manufacturers are struggling to fill even entry-level production positions. Seeing the need, the LISD TECH Center stepped in, and in partnership with Lenawee Now and the Southern Michigan Center for Science and Industry, planned and hosted the first ever Manufacturing Day in Lenawee County. Manufacturing Day, an event quickly spreading nationwide, was founded in 2012 as a way to promote modern manufacturing opportunities to today's youth. Lenawee County's inaugural event took place in October 2016.

There are many misconceptions about careers in manufacturing; some still believe it to be low-tech, dirty, dark, and dangerous. If you have toured one of the modern manufacturing facilities in Lenawee County recently, you know this is far from the truth; most are clean, well-lit, and very high-tech. Robotics and Computer Numerically Controlled machinery are the norm and the skills needed to succeed in today's manufacturing environment are similarly high.

Manufacturing Day is a response to these misconceptions. Today, there are great, high paying manufacturing jobs right here in Lenawee County, and it is important our students know about them. The best way to learn about these opportunities is to experience them first hand and that was the impetus for the LISD's participation in Manufacturing Day.



The concept is simple; get as many students as possible out to see as many examples of modern manufacturing as possible in a single day. The logistics, however, can be quite the challenge. All Lenawee County school districts are invited to participate and send students to the event. On the selected date, typically the first week of October, students are transported to the LISD TECH Center where they are given their schedule for the day, safety glasses, and other necessary personal protection equipment. Students depart via a parade of school buses, heading for participating manufacturers throughout Lenawee County. Each student has the opportunity to visit multiple manufacturers during the event, seeing examples of local companies making products that are sold throughout the world.

At the LISD TECH Center, the emphasis on manufacturing is more than just a one day event. There are currently four programs in the manufacturing cluster, making the LISD a central player in creating the next generation of skilled workers for regional manufacturers. The LISD is also an active participant in Lenawee Now's ALIGN Initiative, a county-wide collaborative effort to create a consistent and reliable talent pipeline for Lenawee County employers, including world class manufacturers.

LISD RECEIVES ACCREDITATION

In February 2017 the Lenawee ISD, JC/LISD Academy, LISD TECH Center, Maurice Spear Campus, and Milton C. Porter Education Center were bestowed with the honor of AdvancED Accreditation.



AdvancED is a community of education professionals that conduct rigorous onsite external reviews to help educational organizations improve. Preparation for the accreditation visit began more than two years ago when members of the LISD Strategic Planning team completed a readiness assessment. This assessment was used to

provide evidence to AdvancED that the organization was indeed ready to start the process.

A five member team (two from out of state, three from within) observed classrooms, interviewed LISD staff, community members, local district superintendents, and parents over the course of three days. The visit culminated in a special LISD Board Meeting on October 12, 2016. The lead evaluator shared a preliminary oral exit report and ultimately a written report.

In the final report, the team highlighted powerful practices (areas of strength), opportunities for improvement (areas the LISD could improve in), and one improvement priority (area the LISD needs to address to maintain accreditation).

Results:

Powerful Practices

1. Teachers throughout the system engage students in their learning with hands-on lessons that connect to life skills and real world applications.
2. Lenawee ISD, in cooperation with the local school districts, have created extensive partnerships with community organizations, area educational institutions, agencies, and local businesses resulting in expanded learning opportunities for all students.
3. Throughout Lenawee ISD schools, staff members are highly regarded as caring, responsive, and reflective of the core values championed by the agency.

Opportunities for Improvement

1. Design and implement a protocol for the effective use of a wide range of student data collected to plan, evaluate and adjust programs and services, as well as instructional practices, to best meet student needs on a daily basis.
2. Develop a plan for on-going training for school board members both at the state and local level.
3. Establish and strengthen an agency-wide systematic process to assess the recruitment and retention trends in staffing positions with program needs.

Improvement Priority

1. Establish and implement a system for two-way communication between the upper level administration in the ISD and the internal stakeholders that is collaborative, transparent, and open which leads to a culture of trust that is system-wide.

Next steps include working on the opportunities for improvement and the improvement priority while collecting evidence for the next external visit in approximately five years.

LISD VISION, MISSION, PURPOSE, AND CORE VALUES

As a result of feedback gathered from the AdvancED accreditation process, surveying of stakeholders, and discussion at the August 29, 2016, LISD Board of Education governance work session, it was decided to revisit and/or revise the LISD Vision, Mission, Purpose and Core Values statements. On January 9, 2017, this was adopted as one of the goals for the LISD Superintendent.

This process was facilitated by Enlightened Learning, LLC (Brad Hamilton) of Jackson, MI, with the goal being to have a group of LISD stakeholders (internal and external) develop Vision, Mission, and Purpose statements along with Core Values for the organization by February 28, 2017.

A group of 41 talented, dedicated, and passionate people participated in the four-meeting facilitated process, both from within the LISD and from the greater community that the LISD serves.

The recommended LISD Vision, Mission, Purpose, and Core Values statements were approved by the LISD Board of Education on March 6, 2017.

Our Vision:

Explore-Support-Inspire
The LISD.....the Journey starts Now.

Our Mission:

Through meaningful relationships, the LISD walks side-by-side in support of every learner through personalized service, innovative programs, and engaged leadership.

Our Purpose:

To empower learners and create opportunities for success.

Through honest communication, mutual trust, integrity, and transparency, the LISD is an inclusionary leader in education that **models the following core values** with all of its stakeholders:

- The LISD is a **learner-centered** organization that believes everyone is always learning and can gain knowledge anywhere, anytime, anyplace, at any pace from anyone.
- The LISD embraces **innovation** by providing opportunities, motivation, creativity, exploration, risk taking, and experimenting.
- The LISD believes that **service** is the fundamental reason the LISD exists.
- The LISD will model an **inspiring** organization in the delivery of all its services.
- The LISD is a **future driven** organization that embraces continuous improvement, change, new technology and will lead in research for academic, professional development and operational best practices.
- The LISD will **lead** by practicing, cultivating, and developing **leadership** opportunities through service, partnerships and collaboration.
- The LISD will be a **collaborative** organization that seeks input, listens to students, local school districts and all stakeholders, embraces teamwork, and works together to improve opportunities and learning.

LISD TRANSPORTATION

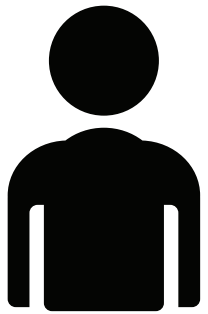
The LISD Transportation Department began transporting special needs students to school in the mid-1970s. LISD transports just under 300 physically and emotionally involved students.



Buses travel over 500,000 miles per year which covers 785 square miles. LISD students live in all 11 of the local school districts, which also encompasses Hillsdale and Washtenaw counties. LISD transports them to 11 center-based locations in Adrian and Onsted. LISD currently has 16 AM and PM regular routes during the school year, with nine mid-day routes. Summer school consists of approximately 11 routes with just over 120 students attending school. In 2009, the LISD Transportation Department partnered with Clean Energy Coalition, an Ann Arbor, Michigan company, to analyze and compare the various fuel type buses in the areas of operational cost and fuel efficiency. The LISD maintains two propane-powered buses and two diesel-electric hybrid buses. LISD staff continue to monitor alternative fuel bus performance to determine which fuel types provide the most cost effective options for the purchase of new buses. Fuel type options at this time include; gasoline, propane, compressed natural gas (CNG),

and diesel-electric hybrid. Based on the current diesel fuel cost and current inefficiencies of other fuel type vehicles, the LISD would see a difference in fuel efficiency amounts to about 15% more miles per gallon with diesel buses. The LISD bus fleet recently received a 100% Pass Rating on a Michigan State Police school bus safety inspection report for the seventh consecutive year.

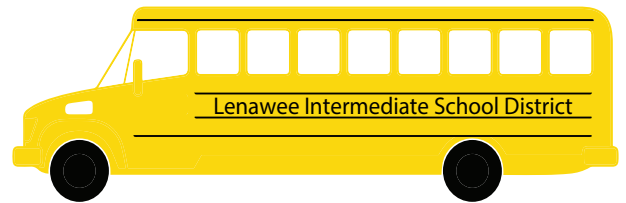
2016-2017 Transportation Data



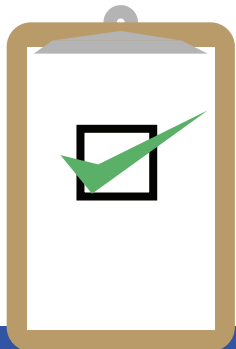
JUST UNDER
300
STUDENTS
TRANSPORTED



500,000
MILES TRAVELED

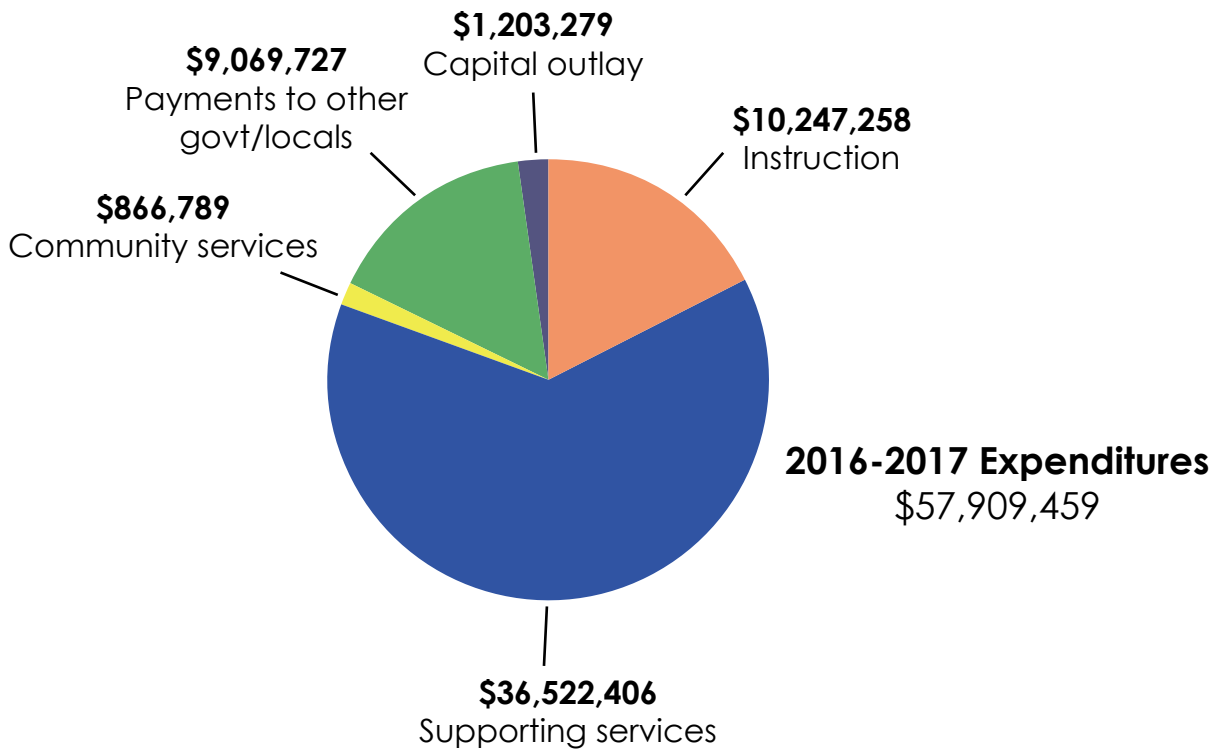
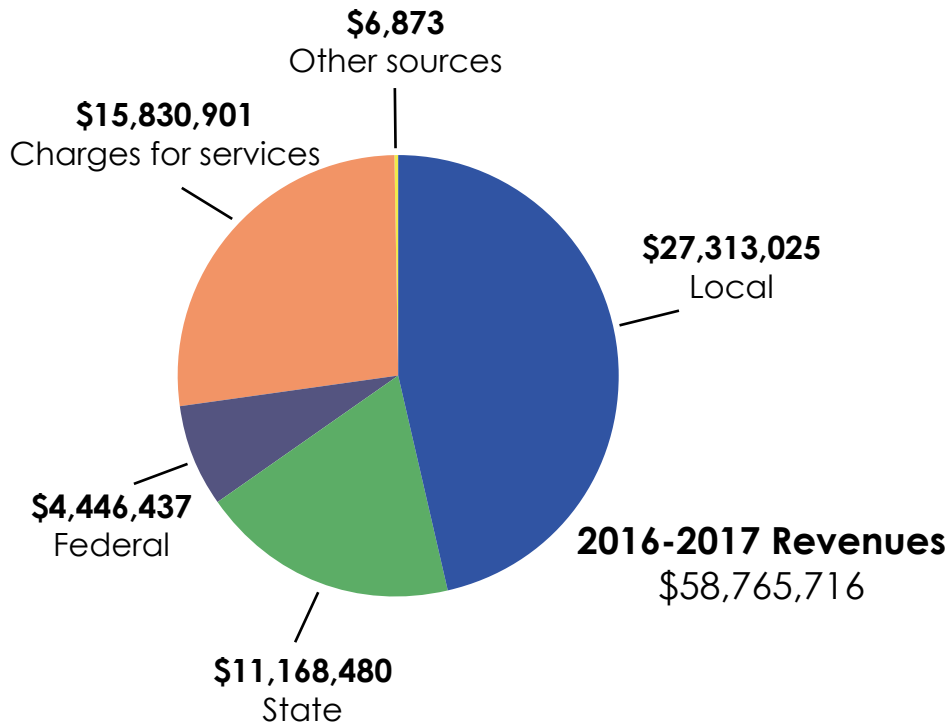


16
REGULAR AM & PM ROUTES,
COVERING ALL 11 LOCAL DISTRICTS



7th CONSECUTIVE
100%
SAFETY INSPECTION
PASS RATING

Financial Highlights



Programs & Services

Special Education

Jody Howard, Director of Special Education - 517.263.8931
The LISD offers individuals with identified disabilities, birth through age 25, a wide variety of special education interventions, programs, and services.

Young Children Services

Megan Karpinski, Supervisor - 517.263.8931
The LISD offers children birth to 5 years old and their families developmental assessments, evaluations, and coordinated services.

Laura Haviland Program

Julie VanBlack, Regional Supervisor - 517.263.5021
This program offers services for individuals who function as having severe emotional impairments and is located at the Milton C. Porter Education Center campus.

JC/LISD Academy: A Regional Middle College

Kim Dusseau, Principal - 517.265.1661
This program is a public middle college for capable and self-motivated high school students and is located on the campus of JC@LISD TECH.

Multicultural Programs

Kathy Campbell - 517.265.1619
Multicultural leadership, awareness, and educational programming are offered and supported for students, families, and staff through the LISD.

STEM Student Services

Kyle Griffith, Ed.D., Assistant Superintendent, Instruction and General Services - 517.265.1610
The LISD partners with the Hillsdale-Lenawee-Monroe Mathematics and Science Center and the Stubnitz Environmental Education Programs to increase STEM literacy for Lenawee County students and educators.

Center for Educational Materials & Technology

Mellissa Wilson, 517.265.1638
CEMaT is an education center that includes a lending library, curriculum materials, and a production lab.

LISD TECH Center

Jenny Heath, Principal - 517.263.2108
The LISD TECH Center offers 25 career and technical education programs to all Lenawee County high school students, as well as summer career exploration camps and support for Project Lead The Way (PLTW) curricula.

Adult Learning Services @ LISD TECH Center

Jack Townsley, Supervisor - 517.265.1650
This program offers tuition-based, face-to-face learning opportunities for adult students looking to build on their personal and professional skills and experience.

Center for a Sustainable Future

Jenny Heath, Principal - 517.263.2108
The Center is a net-zero energy education facility located on 75 acres of open fields and woodlands, and houses three TECH Center programs in the agriscience field.

Instructional and School Support Services

Kathy Campbell - 517.265.1619
LISD staff are available to assist area educators with their curriculum, instruction, assessment, data, educational technology integration, and school improvement needs.

Career Preparation Services

Jane Castle & Kim Dusseau - 517.265.1649
This service is designed to give all students a “focused start” to their career planning by providing options to explore a variety of career opportunities through K-12.

PREP Academy

Beth Abbott, Supervisor - 517.265.1917
This is an alternative high school for pregnant and parenting teens, providing free, on-site child care while students work toward their high school graduation.

Japanese Exchange Program

Ed Lyons, Coordinator - 517.265.2119
The LISD offers an annual exchange for Lenawee County middle school students to host Japanese students in the fall and then visit Japan the following spring.

Project SEARCH

Kurt Kominek - 517.265.0325
This program is a one-year internship program for students with disabilities whose goal is competitive employment. The program is partnered with ProMedica Bixby Hospital.

Special Education Secondary & Adult Services

Jody Howard, Director - 517.263.8931
The LISD offers services for individuals who function as having cognitive impairments.

LISD Transportation

Jaki Smith, Supervisor - 517.265.1613
The LISD transports students with special needs across all 11 public school districts on a year-round basis.

Student Events

Emily Gifford - 517.264.9840
The LISD coordinates county-wide events, such as Debate, Quiz Bowl, Spelling Bee, and the Fine Arts Festival.

LISD TV

Kelly Heidbreder - 517.263.2108
Broadcast locally on channel 22, this resource gives students hands-on broadcast learning.

About the LISD

The Lenawee Intermediate School District (LISD) is a regional educational service agency providing educational leadership and support services to Lenawee County's 11 public school districts. LISD staff work to provide services that are difficult or impossible for individual school districts to provide on their own. The LISD provides educational services to the following Lenawee County public school districts:

Addison | Adrian | Blissfield | Britton Deerfield | Clinton | Hudson |
Madison | Morenci | Onsted | Sand Creek | Tecumseh

CAMPUSES

William J. Ross Education Service Center
4107 North Adrian Highway
Adrian, MI 49221
(517) 265-2119

Milton C. Porter Education Center
2946 Sutton Road
Adrian, MI 49221
(517) 263-8931

LISD TECH Center
1372 North Main Street
Adrian, MI 49221
(517) 263-2108

Center for a Sustainable Future
4260 Tipton Highway
Adrian, MI 49221
(517) 265-2119

Trenton Hills Learning Center
1008 West Maple Avenue
Adrian, MI 49221
(517) 263-6354

LISD BOARD OF EDUCATION

Richard Germond, *President*
James Hartley, *Vice President/Secretary*
Carrie Dillon, *Treasurer*
Robert Vogel, *Trustee*
David Pray, *Trustee*

ADMINISTRATION

Mark Haag, Ed.S., *Superintendent*
Kyle Griffith, Ed.D., *Assistant Superintendent, Instruction & General Services*
Theresa Soto, CPA, *Executive Director of Finance & Business Services*
Dan Garno, Ed.S., *Executive Director of Staff Resources*
Jody Howard, *Director of Special Education*

The LISD Report to our Communities is published by the LISD Superintendent's Office. Questions or comments regarding any of the items contained herein should be directed to the LISD Superintendent at 517.265.2119 or via e-mail at mark.haag@lisd.us. The LISD Annual Education Report is available at www.lisd.us.

The Lenawee Intermediate School District (LISD) does not discriminate in any of its educational programs and services, activities, or employment practices, on the basis of sex, race, color, national origin, ancestry, religion, height, weight, marital status, age, limited English-speaking ability, sexual orientation, or disability. Direct inquiries to: Executive Director of Staff Resources, Lenawee Intermediate School District, 4107 N. Adrian Hwy., Adrian, MI 49221, (517) 265-2119. Persons with hearing impairments, please call the Michigan Relay Center at (800) 649-3777 (TDD).

El Distrito Escolar Intermedio de Lenawee (LISD) no discrimina en ninguno de sus programas o servicios educativos, actividades, o prácticas de empleo sobre la base de género, raza, color, origen nacional / ascendencia, religión, estatura, peso, estado civil, edad, la habilidad limitada de hablar inglés, orientación sexual, o incapacidad. Para conseguir más información: Executive Director of Staff Resources, Lenawee Intermediate School District, 4107 N. Adrian Hwy., Adrian, MI 49221, (517) 265-2119. Personas con problemas de audición, por favor llamen al Michigan Relay Center (800) 649-3777 (TDD).

Please be aware that anyone, at any time, may contact the following, as well as the appropriate LISD supervisor or LISD Staff Resources Office:

Office for Civil Rights	Office for Civil Rights
US Department of Education	US Department of Education
400 Maryland Avenue, SW	600 Superior Avenue East
Washington, DC 20202-1100	Cleveland, OH 44114-2614
202.245.6800	216.522.4970

Are you concerned about any Lenawee county resident's (birth to age 25) development? If you think that this person's growth, learning, or social skills are not the same as those of others the same age, the sooner you check it out the better. Contact:
Lenawee Intermediate School District
Director of Special Education
4107 North Adrian Highway
Adrian, MI 49221
517.265.1682 or toll free 888.444.8144

www.lisd.us